

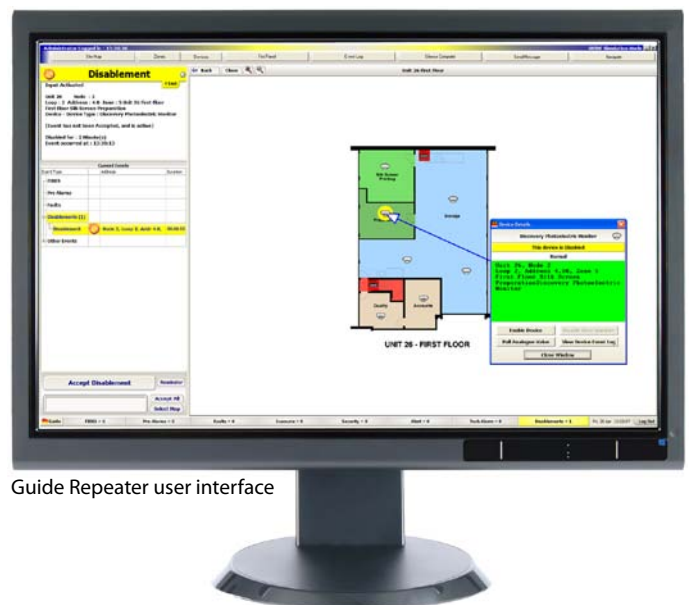
## Providing Repeater Facility for any GUIDE System

### Product Overview

- Syncro GUIDE Repeater is an additional facility for the Syncro GUIDE fire alarm management system.
- GUIDE Repeater allows monitoring and limited control of the Syncro fire control system to be repeated on dedicated computers connected to the building Local Area Network.
- GUIDE Repeater is highly configurable allowing replication of the main GUIDE system or alternative information to be given at the repeater

### Features

- Up to 16 GUIDE Repeaters may be connected to a single GUIDE system
- All monitoring options on GUIDE are supported on the GUIDE repeater. Device and zone disablements may also be performed from the Guide repeater.
- Choice of text, graphics, combined display when an event occurs.
- Easy to use
- Allows graphical information of fire events to be shown at alternative locations
- Unlimited map linking and zoom facility
- Display and control for up to 64-networked Syncro panels



Guide Repeater user interface

## Range

### Product Code Description

<b>GR2001</b>	GUIDE Repeater - single repeater package
<b>GR2004</b>	GUIDE Repeater - 4 repeater package
<b>GR2016</b>	GUIDE Repeater - 16 repeater package

# Specification

## Technical

	<b>Recommended Minimum</b>	<b>Notes</b>
<b>Processor</b>	Intel Pentium 1Ghz	The faster the better
<b>Operating system</b>	Windows® XP/Vista / 7 Professional	Will operate under Windows® 2000
<b>Memory</b>	256MB minimum	The larger the better.
<b>Hard disk</b>	10GB minimum	
<b>Graphics</b>	1024 x 768 16M colours	The driver must allow this mode with large fonts. Separate Graphics card with 256MB graphics memory recommended
<b>Sound card</b>	Any PC sound card	
<b>Loudspeaker</b>	Any PC speakers	More convenient if built into PC.
<b>Monitor</b>	Any that supports above graphics driver	17 inch minimum recommended, the larger the better. (1024 x 768)
<b>Pointing device</b>	Mouse essential	Third button and wheels are supported. Touch screen option supported
<b>Printer</b>	Optional	Any type.
<b>Parallel port</b>	Optional	Required if parallel printer to be used.
<b>Network</b>	One network port	
<b>CDROM drive</b>	Any	Required for installation of software and updates.
<b>Backup drive</b>	CD Writer	To back up history.

