

Hydrosense Water Detection System

System Features

- Linear detection with Hydrowire
- Point detection with probes
- Zonal repeat contacts
- Easy to install
- Easy to service and maintain
- Auxillary alarm contacts
- Monitored alarm outputs
- Battery backup
- Remote monitoring

Control Panels

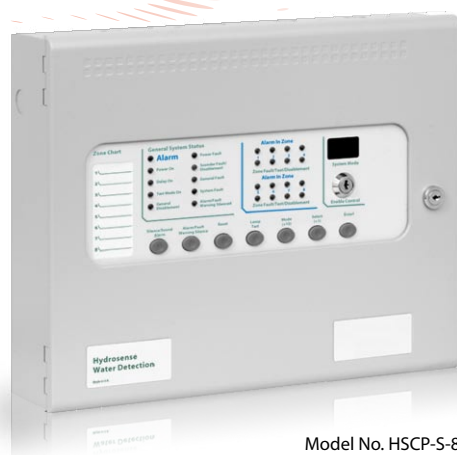
- Two types of control panel are available. The Hydrosense HSCP is available in 2, 4 and 8 Zone configurations and the Hydrosense K200000 range for 12 Zones or greater. Flush versions and special finishes are also available.
- Repeater panels and ancillary PCBs are available to provide common alarm, common fault, coincidence and zonal alarm, VFCs allowing control of sub-systems, graphical mimics and plant, remotely from the main panel over a two wire data bus.

System Overview

- A Hydrosense Water Detection System installed in vulnerable areas will continuously monitor the potential hazards around the clock, year in year out.
- The Hydrosense system has a range of attractive and unobtrusive control panels containing the alarm circuitry, power supply and has the facility for 24 hour battery standby.
- A Hydrosense System has two methods of leak or moisture detection, Linear or Point detection.
- Linear detection is provided by Hydrowire moisture sensitive cables which are connected to the control panel via a special Connection Box, by simple two core leader cable making installation quick and inexpensive.
- Point detection is provided by Floor or Drip Tray Probes also connected to the control panel by simple two core leader cable.
- The Hydrowire and Probes are continuously monitored. Any disconnection or fault is immediately indicated on the control panel. All monitoring indicators can be repeated to remote repeater panels or via volt free contacts to a BMS.
- **Hydrosense Floor and Drip Tray Mounting Probes**
The Floor Probe is simply fixed to the floor and adjusted to give the required detection level and connected to the control panel via a simple junction box.
The Drip Tray Probe has exactly the same facilities as the floor mounting probe but has a bracket for mounting onto the side of an ACU drip tray.

■ Hydrowire

Available as standard 5 and 10 metre lengths pre-terminated with DIN plugs, Hydrowire is a flexible cable which will continuously monitor large areas. When even a small amount of water or moisture comes into contact with Hydrowire it will trigger an alarm. Hydrowire will dry out in around 20 minutes for use again. Each zone requires a junction box and an end of line plug.



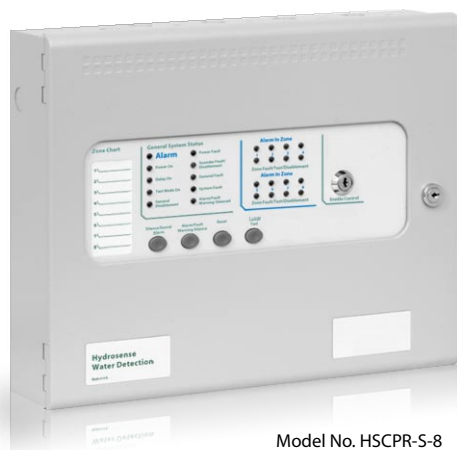
Model No. HSCP-S-8



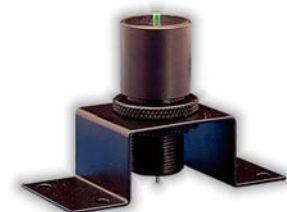
Model No. K2024005

Hydrosense HSCP Control Panel Features

- Fully compliant with & tested to BS EN54-2 and BS EN54-4
- Available in 2, 4 or 8 zones
- Compatible for use on BS5839: Part 1: 2002 installations
- 2-wire repeaters and ancillary boards
- Fully programmable using simple menu options
 - Adjustable sounder delay time
 - Sounder configuration options
 - Zonal sounder delay detectors only
 - Zonal sounder delay call points only
 - Coincidence input selection
 - I.S Barrier selection by zone
 - Short circuit by zone
 - Non latching zones
 - Silent zones
 - Zone input delay
 - General panel configuration
- Simple, single board construction
- Installer friendly
- Two monitored sounder outputs
- 3 Amp power supply
- Auxiliary power output



Model No. HSCP-R-8



Model No. K2101

Specifications

Technical

Size	- 385mm(W) x 310mm(H) x 90mm(D)
Construction	- 1.2mm mild steel
Finish	- Epoxy powder coated
Colour - lid & box	- BS 00 A 05 grey - fine texture
Colour - controls plate & labels	- RAL 7047 light grey - satin
Supply voltage	- 230V AC (+10%/-15%)
Mains supply fuse	- 1.6 Amp 250V
Power supply DC rating	- 24V 3 Amps
Maximum battery size	- 7Ah 12V (2 per panel)
Fault contact rating	- 30V DC 1 Amp
Local fire contact rating	- 30V DC 1 Amp
Alarm contact rating	- 30V DC 1 Amp
Sounder output rating	- 0.5A per output (max 1.6A over all outputs)
Detection zone current	- 1.6 milliamps
Detection zone EOL resistor	- 6k8 5%
Sounder output EOL resistor	- 10k 5%
Cable capacity	- 2.5mm ² per terminal
Operating temperature	- -5°C to +50°C
Operating humidity	- <95% (non condensing)

Hydrosense Probes Technical

Size	- 95mm (max.) 80mm (min.)H x 45mmD x 100mmW
Indicator	- Green LED
Connection	- 4 pin din flying lead (1 metre)
Material	- Black nylon

Equipment

Product Code Description

HSCP-S-2	2 zone Control Panel
HSCP-S-4	4 zone Control Panel
HSCP-S-8	8 zone Control Panel
HSCP-R-2	2 zone Repeater Panel
HSCP-R-4	4 zone Repeater Panel
HSCP-R-8	8 zone Repeater Panel
K2101	Floor mounted probe
K2102	Drip tray probe
K2103	Remote indicator
K2104	5 metre Hydrowire
K2105	10 metre Hydrowire
K2106	Hydrowire connection box
K2110	End of line plug
K2111	Leader cable 50M
K2112	Fixing clips (100)
S 9615/A	Protection Cage for Floor Mounted Probe
F/A/1W	Fire-Cryer® with water leakage alarm

Larger control panels are available on request

Hydrosense Water Detection System

Hydrosense K200000 Control Panel

Features

- 12 - 48 zones as standard more available on request
- Common fire and fault contacts
- Remote signal contact and isolate
- Zonal one man test
- Zonal volt free contacts
- Zone isolate facility

Technical

Metal Enclosure - 12, 16 & 24 Zones

Construction	- Zone 1.2mm fully welded sheet steel
Finish	- Epoxy powder coated
Standard colour	- 2 tone grey
12 zone size	- 500W x 355H x 107mmD
16 & 24 zone size	- 570W x 420H x 110mmD
Construction	- 1.2mm fully welded sheet steel
Power supply	- 2.5 Amp
Zonal repeat contacts	- Volt free normally open 1 Amp at 30V DC
Max. battery capacity	- 7.0A/h (12 zone) 12.0A/h (16 & 24 zone) } 230V AC



Model No. K2024005



Equipment

Product Code	Description	Weight
K2012003	12 zone control panel	8.6 kg
K2016005	16 zone control panel	11.0 kg
K2024005	24 zone control panel	11.5 kg
K2101	Floor mounted probe	-
K2102	Drip tray probe	-
K2103	Remote indicator	-
K2104	5 metre Hydrowire	-
K2105	10 metre Hydrowire	-
K2106	Hydrowire connection box	-
K2110	End of line plug	-
K2111	Leader cable 50M	-
K2112	Fixing clips (100)	-
S 9615/A	Protection Cage for Floor Mounted Probe	-
F/A/1W	Fire-Cryer® with water leakage alarm	-

Larger control panels are available on request



Model No. K2101

VIMPEX

Shaping Alarm Technology

Star Lane, Great Wakering
Essex, SS3 0PJ. England

Tel: +44 (0)1702 216999
Fax: +44 (0)1702 216699

Email: sales@vimpex.co.uk
Web: www.vimpex.co.uk

Hydrosense Matrix Overview

- The Matrix Mimic Panel can be connected to any number of Hydrosense control panels and provides a clear, geographical indication of alarm activation enabling speedy identification of the source of an alarm.
- The Matrix system uses flexible fibre optic light guides to illuminate areas on a floor plan, laid over a high resolution grid. This unique system dispenses completely with wiring and enables indicators to be moved, removed or added on site without the need for any wiring. Matrix is housed in attractive, slimline enclosures and with high quality, full colour or monochrome floor plans.
- All indicators can be configured to operate via switched positive or negative inputs providing compatibility with a wide range of input/output boards. Matrix can be supplied with or without common LEDs and controls. Optional LEDs indicate Power on, Fire and Fault and optional controls are for Buzzer silence and Lamp test.



Hydrosense Matrix Control Panel Features

- Up to 320 LED's can be controlled
- Select up to 12 printed colours (not including background and building outline)
- Available in a range of standard enclosures to suit any application
- Bespoke sized units can be made upon request
- Choice of Red, Green or Yellow LED's
- Available with or without controls
- Matrix can easily be upgraded on site with minimal cost and effort
- EN54-4 approved PSU (optional)

Technical

Mains supply*	- 230V AC +10% - 15% (100 Watts max.)
Mains supply fuse*	- T2A L250V Replace only with similar type
Power supply rating*	- 4 Amps total including battery charge 28V +/- 2V
Maximum ripple current*	- 200 millivolts
Battery type* (Yuasa NP)	- Two 12 Volt sealed lead acid (7Ah maximum)
Battery charge voltage*	- 27.6VDC nominal (temperature compensated)
Battery charge current*	- 1.5A maximum
Max. current draw from batteries*	- 3 Amps. With mains power source disconnected
Supply voltage (24V versions)	- 18 to 30V DC
Terminal capacity	- 0.5mm ² to 2.5mm ² solid or stranded wire
Enclosure Size & mimic area	- See 'Enclosure Size Options'
Construction	- 1.2mm mild steel
Finish	- Epoxy powder coated
Colour - lid & box	- BS 00 A 05 grey - fine texture
Colour - controls plate & labels	- RAL 7047 light grey - satin
Mimic	- 3mm Clear Anti-Glare Acrylic
Cabinet locks	- M2/M3 - standard 801 key, S3/S4 - standard KT3001 key
Maximum distance from control panel	- 1km with 1.5mm ² cable
IP rating	- IP30
Operating temperature	- -5°C to +50°C
Number of indicators (standard models)	- M2 size - up to 32, M3 and S3 size - up to 64, S4 size - up to 96

* 230 V Versions only